

- The Heater will start to heat the water instantly and depending on initial water temperature appropriate time would be needed by heater to get water to desired temperature level
- Once heating is completed, please switch off power supply. Let the heater be in its position for minimum 2 minutes before removing from water
- Use the handle to take out the heater as the heating element might still be hot while taking out. Keep the heater in cool dry and safe place before next use

CARE FOR HEATER

- To avoid scaling, it is recommended to wipe the heater with a soft dry cloth once it has cooled to room temperature
- Store the product in safe and dry place when not being used for a long time

TECHNICAL SPECIFICATION

Model No.	IMMERSION HEATER, IH403
Power	1000W
Voltage	230V
Frequency	50Hz

EVEREADY >>>
INDUSTRIES INDIA LTD.

1, Middleton Street, Kolkata-700071, India
Consumer Care - address as above - Ph. 1800-102-4041
Email: appliancecare@eveready.co.in

EVEREADY
Appliances



IMMERSION HEATER



Cu Tube

IH403

**2YEAR
WARRANTY**



IS: 368
CM/L 0009625085



SAFETY
IS: 302-2-01
CM/L 0009625186

**USER
MANUAL**

*Images are only indicative.
Actual product may differ from the one shown on the carton.

IMPORTANT SAFEGUARDS

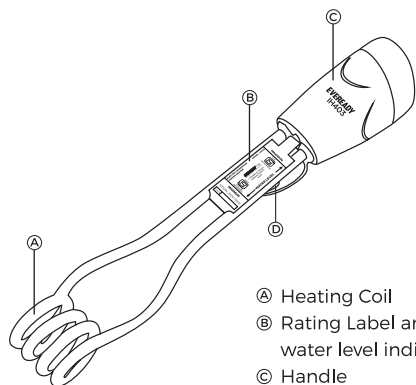
This product is designed and intended for household use only.

Please read all the instructions carefully before using Eveready Immersion Heater, even if you are familiar with the product and place it handy for future reference.

- To protect against electrical hazards, do not immerse the handle, cord or plug in water or any other liquid.
- Immersion heater is to be used for heating water only and not any other liquid.
- Ensure that the voltage specified on rating label of your product corresponds to your house electricity supply voltage before plug in. The power socket has to be properly earthed.
- Only metal vessels should be used for heating and vessels made out of plastic or any combustible material should not be used.
- Do not operate the product when it is damaged or it works improperly. Bring the product to nearest authorized service facility for examination, repair or adjustments to avoid any hazard.
- Switch off and remove the plug from the power outlet when not in use, also while cleaning.
- Immersion heater should not come in contact with any combustible material during heating and even after completion of heating process.
- When using extension cord with your product, make sure the extension cord is correctly wired and rated for its use.
- Use of external timer switch should be avoided as it might be hazardous.
- Heating coil of heater has to be submerged in water before power is switched on. The water level needs to be between indicated levels to avoid fusing of element.
- Do not leave the product unattended when it is connected to main supply outlet.
- Heater has to be removed from water after waiting for minimum two minutes post switching off power supply.

- Avoid touching top metal surface as this could be hot during operation and immediately after switching off. Proper use of handles are recommended.
- Appliance should not be covered or stored unless cooled to room temperature.
- Keep the product out of reach of children at all times. Close supervision is necessary when used near children or by physically challenged person or by people who lack experience to use same appliance.
- Do not abuse the cord. Never carry the product by the cord or yank it to disconnect it from the outlet, instead grasp the plug and pull to disconnect.
- The use of attachment or accessories not recommended or sold by Eveready may result in fire, electric shock or personal injury.
- To clean, wipe the exterior with a damp cloth once the product has cooled down after use.
- Do not operate or place any part of this product on or near any hot surface (such as gas or electric burner or near a heated oven).

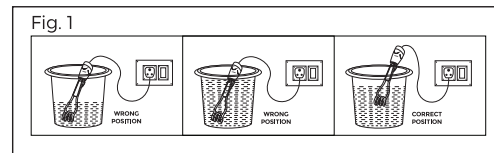
PARTS IDENTIFICATION



- Ⓐ Heating Coil
- Ⓑ Rating Label and water level indicator
- Ⓒ Handle
- Ⓓ Hanging hook

HOW TO USE

- Wipe the Immersion Heater with a soft dry cloth before first use.
- Place the Heater using the hanging hook on a metal vessel filled with water as indicated in Fig. 1 below



- Water Level has to be between the Min and Max level as indicated on the rating label marking. Refer Fig. 2



- Connect the power plug to well earthed power socket. Switch on the power supply.